

Thanks to Bootleg for the camera, tools, floor, and Taco Bell.

This should explain how to dismantel your stock gauges all the way down, with the exception of taking the needles off of the faces.

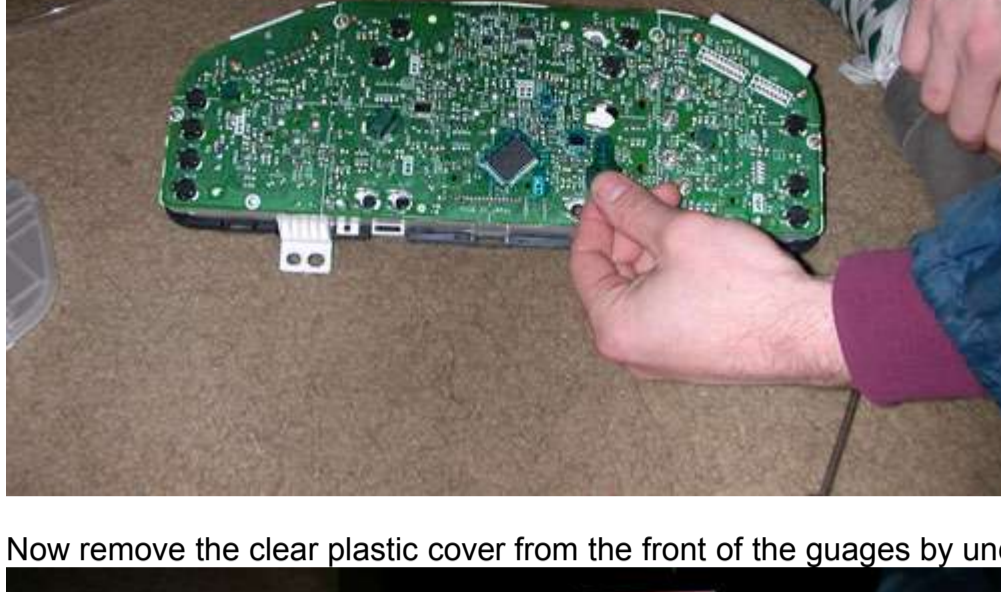
Tools: Small phillips head screwdriver  
Small flathead scrwdriver



First...Remove the metal mounting bracket from the top of the gauge.



You can remove the LED's by turning them counter-clockwise.



Now remove the clear plastic cover from the front of the guages by unclipping it in seven different places.



Next, remove the translucent plastic cover from the back of the assembly by unscrewing the 4 screws.

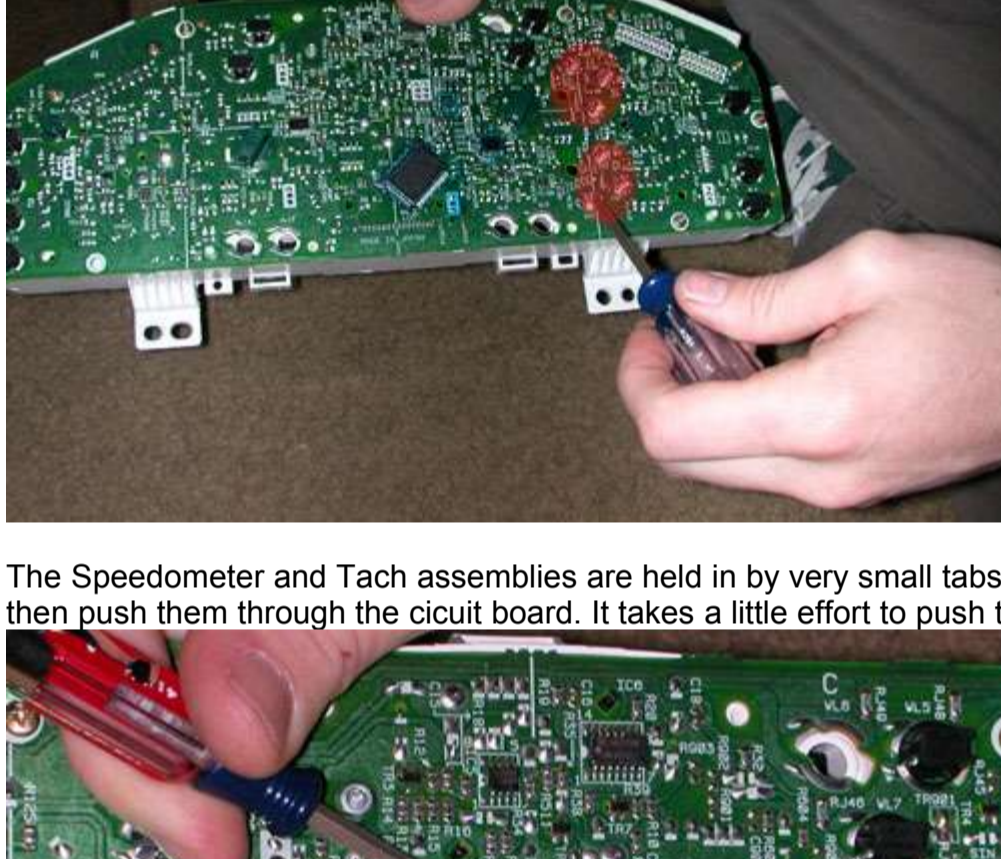


Remove the black plastic cover on the front of the gauges now by unclipping it in 6 places.

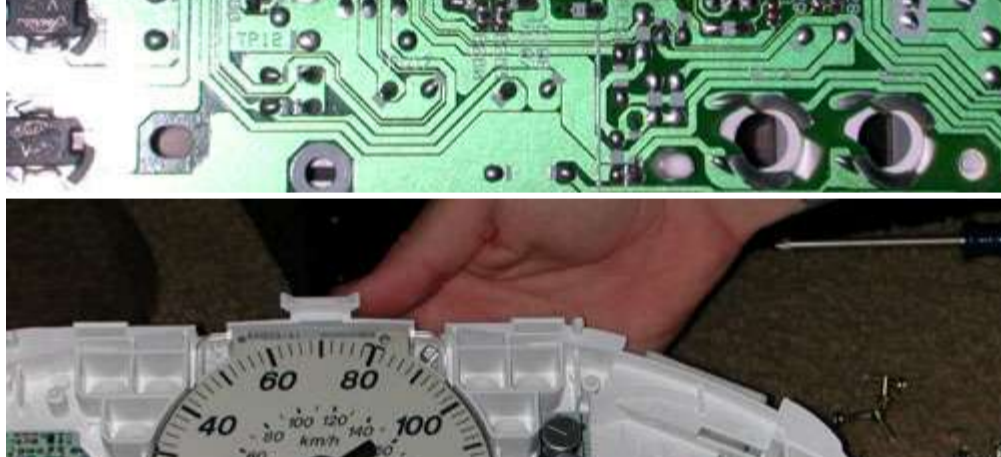


**Be very carefull now since your needles are exposed if you lay the gauges down on something.**

The Gas and Temp gauges are removed by taking out the 6 screws on the right side of the circuit board.



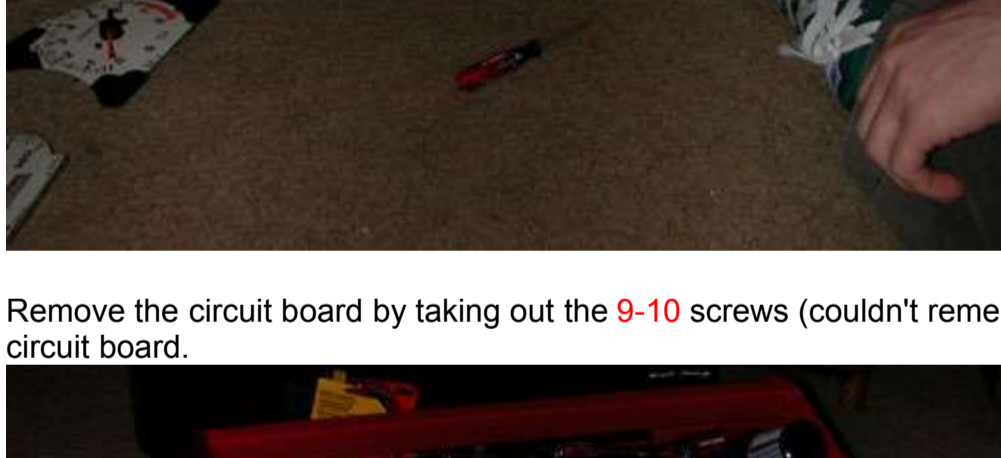
The Speedometer and Tach assemblies are held in by very small tabs. Just pry the tabs up with your small flathead scredriver and then push them through the cicuit board. It takes a little effort to push them through.



Once that is done all you should have left is the circuit board and the white mounting piece.



Remove the circuit board by taking out the 9-10 screws (couldn't remember if I was missing a screw or not) from the back of the circuit board.



That should be evmething.

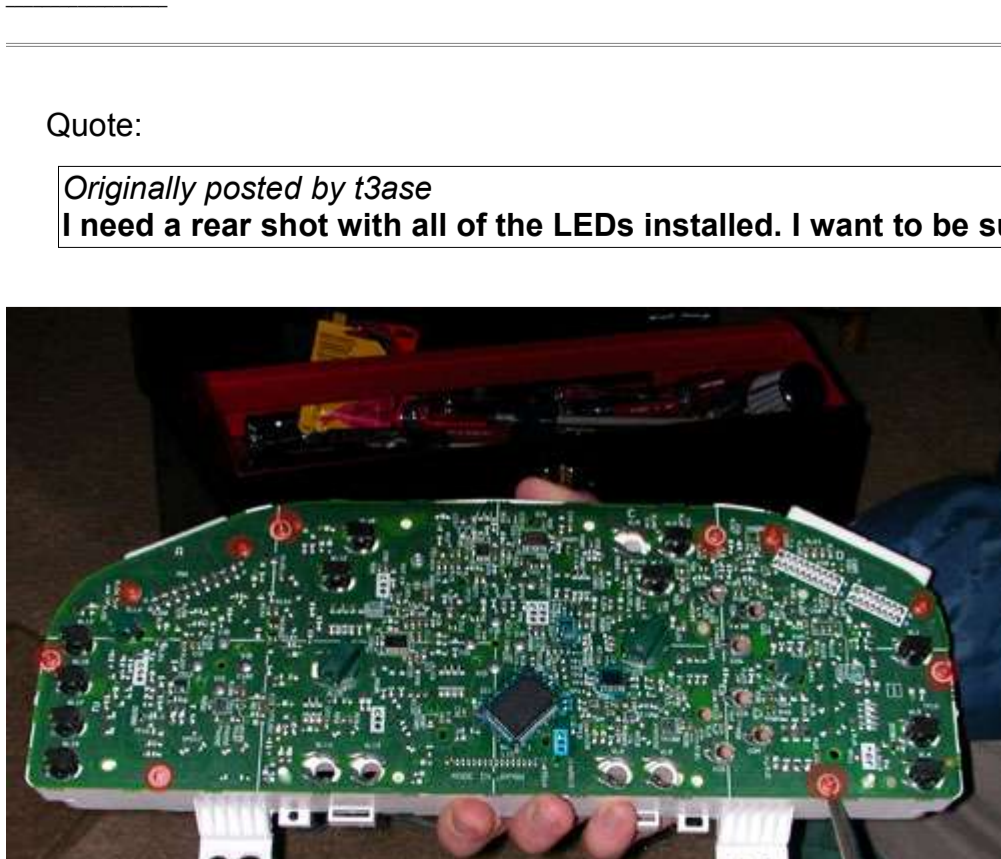


Now you should be able to switch gauge faces and odometers into any other protege cluster. I'll have pictures of mine up later.

Quote:

*Originally posted by t3ase*

**I need a rear shot with all of the LEDs installed. I want to be sure I put them in the right spots.**



This is the best shot I have. The four holes at the bottom aren't used. There are 5 LED's on tthe far left and 3 on the far right. There is one small one behind the Gas/Temp gauge. Of the ones at the top...the ones at the top left are both used. The ones at the top right use all but the upper left hole.

If that doesn't make any sense I understand.